

Aging in Place

# Ambient Intelligence

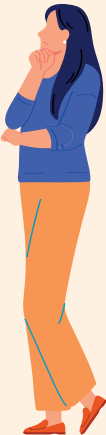
Healthcare services have a new tool at their disposal: a turnkey chatbot integrated into their systems, powered by intelligent sensors and extensive AI capabilities.

### Follow Us

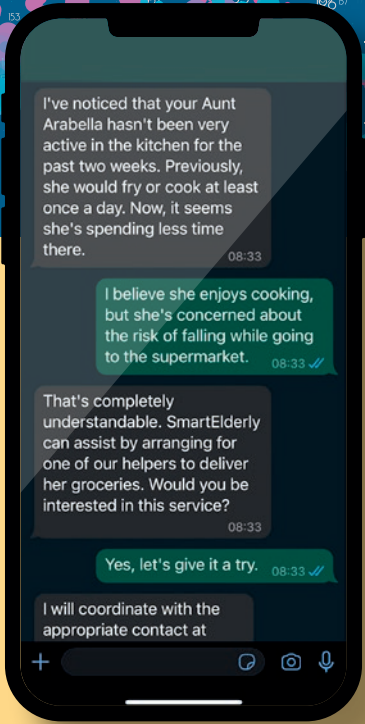
<https://www.descamps.technology>



**Aunt Arabella** is 79. She remains surprisingly active and enjoys the comfort of her home, accompanied by her beloved cat. Despite her energy, she experiences fatigue. Her niece Clara, who is occupied with work throughout the day, respects Arabella's independence and does not wish to unsettle her by suggesting a move to a senior residence. Nevertheless, Clara is concerned and desires to ensure that she is alerted promptly should any issues arise.



**Clara** has enrolled in the SmartElderly service, which has equipped her with four discreet sensors to be placed in the living room, bedroom, bathroom, and kitchen. Privacy concerns are allayed, as these devices are designed without cameras or microphones. The only requirement is the Wi-Fi password of Aunt Arabella, which, amusingly, seems to have slipped her mind once more.



**Sensors & AI** have observed a change in Aunt Arabella's routine, indicating she has stopped cooking. The SmartElderly chatbot alerted Clara and facilitated a connection to their food delivery service for support.

Additionally, SmartElderly is closely monitoring Arabella's daily patterns. One of their medical professionals is reviewing her situation, as it appears Arabella has been experiencing shorter nights of sleep — a matter that warrants a separate discussion.



## SmartElderly

now routinely delivers meals to Aunt Arabella. Their sophisticated AI and sensor system recently noted that the television has remained off for several days. Consequently, the caregiver has been prompted to check on this during their next visit. It turned out to be a simple issue: the remote control's batteries were depleted. At 79, Arabella is unsure how to replace them.

This incident exemplifies how ambient sensing and artificial intelligence can care for our loved ones, providing precise context to healthcare services.

